

**Model HPA-BB**



# UNIFORM TOP CASE SEALER



Packaging  
Systems

P.O. Box 9063  
Yakima,  
Washington  
98909

3801 West  
Washington  
Avenue  
Yakima,  
Washington  
98902

Phone:

509-966-4300

Fax:

509-452-3307

Email:

info@marq.net

MARQ's High Performance Top Case Sealer with Bottom Belt Drive optimizes the production of any packaging line.

Higher sealing speeds may be obtained since only the top flaps of RSC or HSC

# BOTTOM BELT DRIVE FOR FASTER SEALING SPEEDS

2-piece telescoping cases are automatically folded and sealed.

the highest sealing speeds are reached with glue sealing.

The bottom belt operates at a constant speed, moving each case through the machine. The HPA-BB can utilize either pressure sensitive tape or hot-melt glue, although

- **Tape and glue models available**
- **Seals 35 cases per minute with higher speeds available**

- **Runs on 220 or 440 VAC**
- **Simple to operate and maintain**
- **Bottom belt conveying**

- **Zinc plated for corrosion resistance**
- **Heavy duty welded steel frame**

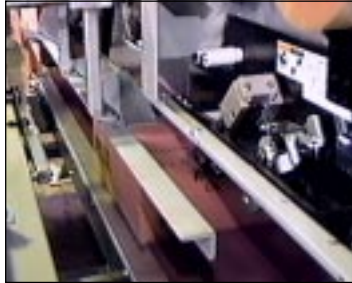
MEMBER



# Upgrade to a **MARQ**<sup>®</sup>

P.O. Box 9063 Yakima, WA 98909  
3801 Washington Ave. Yakima, WA 98902  
509/966-4300 FAX 509/452-3307  
Email: info@marq.net

## HPA BOTTOM BELT TOP CASE SEALER



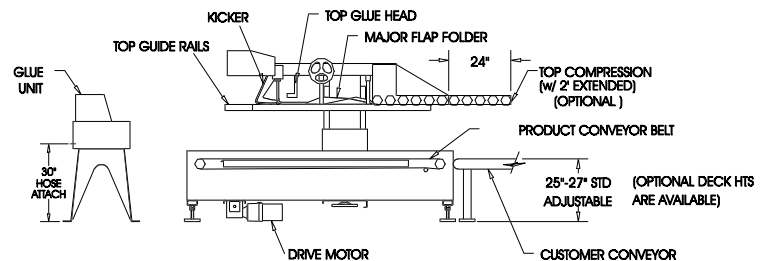
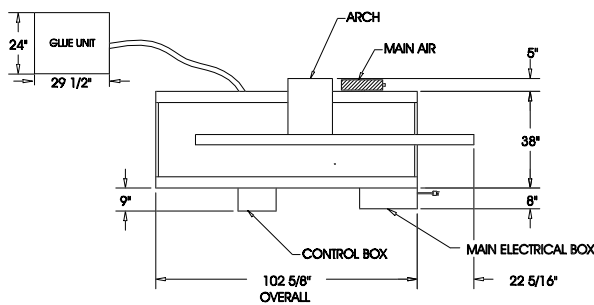
The bottom belt provides continuous case transfer through the machine.



Simple yet efficient flap folding method automatically tucks both top major flaps.



Pressure-sensitive tape (or hot-melt glue) assures smooth, even sealing on every case.



## Specifications

### Case Specifications:

175 to 275 P.S.I. bursting test, single wall  
A, B or C flute

### Case Size:

	Minimum	Maximum
Length	8.0"	22.0"
Width	8.0"	20.0"
Height	8.0"	20.0"

### Power Requirements:

Electrical: 220/440 VAC 60 Hz, 3 phase  
Pneumatic: 90 PSIG (6.5 BAR gauge pressure), 4.0 SCFM (11.89 M<sup>3</sup>/h 21°C, 101 kPa) maximum at maximum cycle rate

### Operation Conditions:

Use in dry, relatively clean environments at 40°F to 120°F (5°C to 49°C) with clean, dry boxes.

Machine should not be washed down or subjected to conditions causing moisture condensation on components. Optional stainless steel construction with NEMA 4 electrical is available.

### Operating Rate:

Up to 35 cases per minute. (Higher speeds available)

### Machine Dimensions:

Overall Dimensions:  
Length: 102.625"  
Width: 51.0"  
Height: 60.0"  
Deck Height: 25"-27" adjustable  
Weight: 2500 lbs.

**Contact your sales representative for application requirements outside the above specifications.**

**Distributed by:**