

**HPA-LF**



# LARGE FRAME UNIFORM CASE SEALER

**MARQ**

Packaging  
Systems

P.O. Box 9063  
Yakima,

Washington  
98909

3801 West  
Washington  
Avenue  
Yakima,

Washington  
98902

Phone:  
509-966-4300

Fax:  
509-452-3307

Email  
info@marq.net



## SEALING FOR LARGE, HEAVY PRODUCTS

The Large Frame HPA was developed to fold and seal the top and bottom of cases containing products that were too heavy to lift into a case. A specially designed, rotating table folds the bottom minor flaps. The case is then conveyed through

the machine, which squares the case, then folds and seals all remaining flaps. The open design and standard motorized arch allow for quick change

over from one case size to the next. This model is ideal for large products such as air conditioners, dishwashers, and televisions. As with all MARQ machines, it is built MARQ TUFF in the U.S.A., assuring availability of parts and service.

- **Heavy duty, welded 3/16" steel frame**
- **Easily Adjustable**
- **Easy to operate & maintain**
- **Rugged construction**
- **All components available locally in the U.S.A.**
- **Seals up to 6 cases per minute**
- **Automatic case centering**
- **Glue or Tape Sealing**
- **Built to exact specifications**

MEMBER

**PMMI**  
USA

# Upgrade to a **MARQ**<sup>®</sup>

P.O. Box 9063 Yakima, WA 98909  
3801 Washington Ave. Yakima, WA 98902  
509/966-4300 FAX 509/452-3307  
Email: info@marq.net

## LARGE FRAME TOP AND BOTTOM CASE SEALER



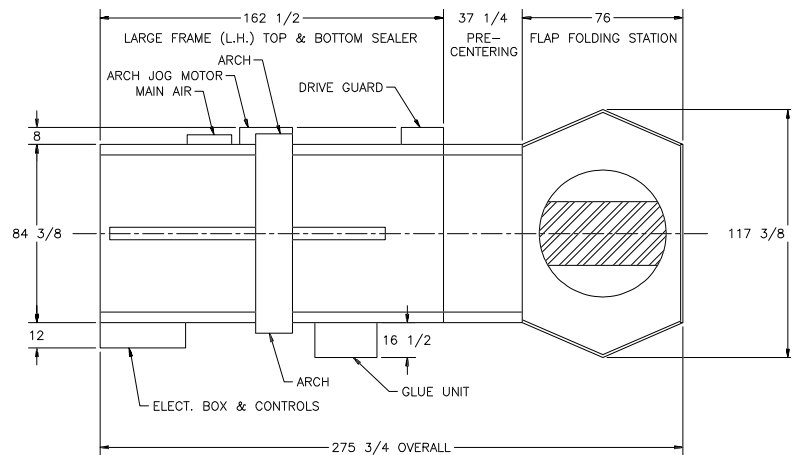
The infeed gate and turn table are used for folding the minor flaps.



Automatic centering assures positive, square sealing and eliminates case jams.



Top and bottom hot-melt glue provides reliable sealing.



## Specifications

### Case Specifications:

175 to 275 P.S.I. bursting test, single wall  
A, B or C flute

### Case Size:

	Minimum	Maximum
Length	15.0"	36.0"
Width	14.0"	30.0"
Height	16.0"	40.0"

If your case sizes do not fall into this case range, please call MARQ or your sales representative.

### Power Requirements:

Electrical: 220/440 VAC 60 Hz, 2.2A160 watts, 3 phase  
Pneumatic: 80 PSIG (6.5 BAR gauge pressure), 4.0 SCFM (11.89M<sup>3</sup>/h 21°C, 101 kPa) maximum at maximum cycle rate

### Operation Conditions:

Use in dry, relatively clean environments at 40°F to 120°F (5°C to 49°C) with clean, dry boxes.

Machine should not be washed down or subjected to conditions causing moisture condensation on components. Optional stainless steel construction with NEMA 4 for washdown environments is available.

### Operating Rate:

Up to 6 cases per minute depending on case length.

### Machine Dimensions:

Overall Dimensions:  
Length: 275.0"  
Width: 117.0"  
Height: 113.0"  
Deck Height: 30.0"

**Contact your sales representative for application requirements outside the above specifications.**

Patent applied for

**Distributed by:**

**NOTES:**

1. L.H. SHOWN,  
R.H. OPPOSITE.

MARQ PACKAGING SYSTEMS, INC. P.O. BOX 9063 YAKIMA WA. 98909	
SPECIAL Q93132 (FRIGIDAIRE)	SHEET 1 OF 1
DRAWING NO. LFB-866	
REV.	
TITLE HPA-L (L.H.) TOP & BOTTOM GLUER	
DRAWN DLB	DATE 10-27-93
APPROVED	DATE
SCALE NONE	NONE

