

Model HPA-LL

UNIFORM CASE SEALER WITH LID LIFTERS



MARQ®

Packaging
Systems

P.O. Box 9063
Yakima,
Washington
98909

3801 West
Washington
Avenue
Yakima,
Washington
98902

Phone:
509-966-4300

Fax:
509-452-3307

Email:
info@marq.net

This newly designed High Performance top and bottom sealer has been modified for the fruit and vegetable industries to fold and seal the

top of an HSC case without damage to overpack product. This machine holds the outer half slotted case

with MARQ's mechanical Lid Lifters while the inner HSC case is gently lowered so that the major and minor flap can be

folded without damaging the product. The bottom of the case is sealed first, then it moves to the floating top tape head. This unique tape head accepts variable case heights of up to two inches. It utilizes both a split bottom belt and side belt conveying system that assures accurate, square sealing on every case.

IDEAL FOR FRUIT AND VEGETABLE PACKERS

- **Tape and glue models available**
- **Seals 5-20 cases per minute**
- **Split bottom and side belt conveying**

- **External tape roll mounts**
- **Runs on 220 or 440 VAC**
- **Designed for the fruit and vegetable industries**

- **Simple to operate and maintain**
- **Zinc plated for corrosion resistance**
- **Heavy duty welded steel frame**

MEMBER

PMMI
USA

Upgrade to a **MARQ**[®]

P.O. Box 9063 Yakima, WA 98909
3801 Washington Ave. Yakima, WA 98902
509/966-4300 FAX 509/452-3307
Email: info@marq.net

HPA WITH LID LIFTERS



Mechanical lid lifters grip the flaps of the outer HSC lid and the bottom drop deck lowers the inner case enabling the top flaps to be sealed without damage to the product.



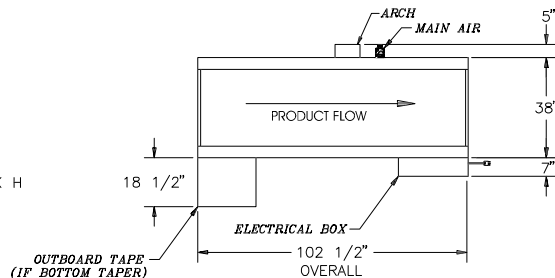
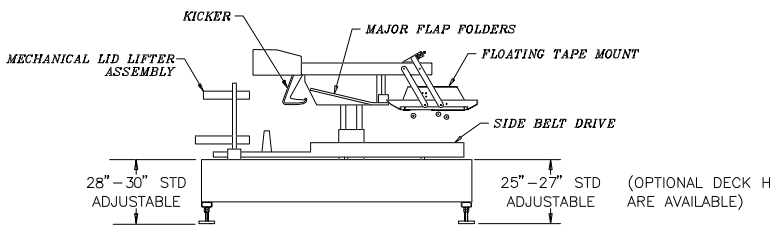
Split bottom and side belt drive conveyer cases through the machine. Also available with flight bar, flight lug, or a combination of the four different conveying systems.



The two side compression rollers on each side of the machine hold the top half of the case up in position during the folding process.



MARQ's unique floating top tape head ensures smooth, even sealing of cases overpacked up to two inches.



Specifications

Case Specifications:

175 to 275 P.S.I. bursting test, single wall
A, B or C flute

Case Size:

	Minimum	Maximum
Length	8.0"	30.0"
Width	8.0"	20.0"
Height	5.0"	19.0"

Power Requirements:

Electrical: 220/460 VAC 60 Hz, 3 phase
Pneumatic: 90 PSIG (6.5 BAR gauge pressure), 4.0 SCFM (11.89 M³/h 21°C, 101 kPa) maximum at maximum cycle rate

Operation Conditions:

Use in dry, relatively clean environments at 40°F to 120°F (5°C to 49°C) with clean, dry boxes.

Machine should not be washed down or subjected to conditions causing moisture condensation on components. Optional stainless steel construction with NEMA 4 electrical is available.

Operating Rate:

Up to 20 cases per minute.

Machine Dimensions:

Overall Dimensions:

Length:	102.50"
Width:	50.0"
Height:	60.0"
Deck Height:	25"-27" adjustable (Infeed is 3" higher than discharge)
Weight	1850 lbs.

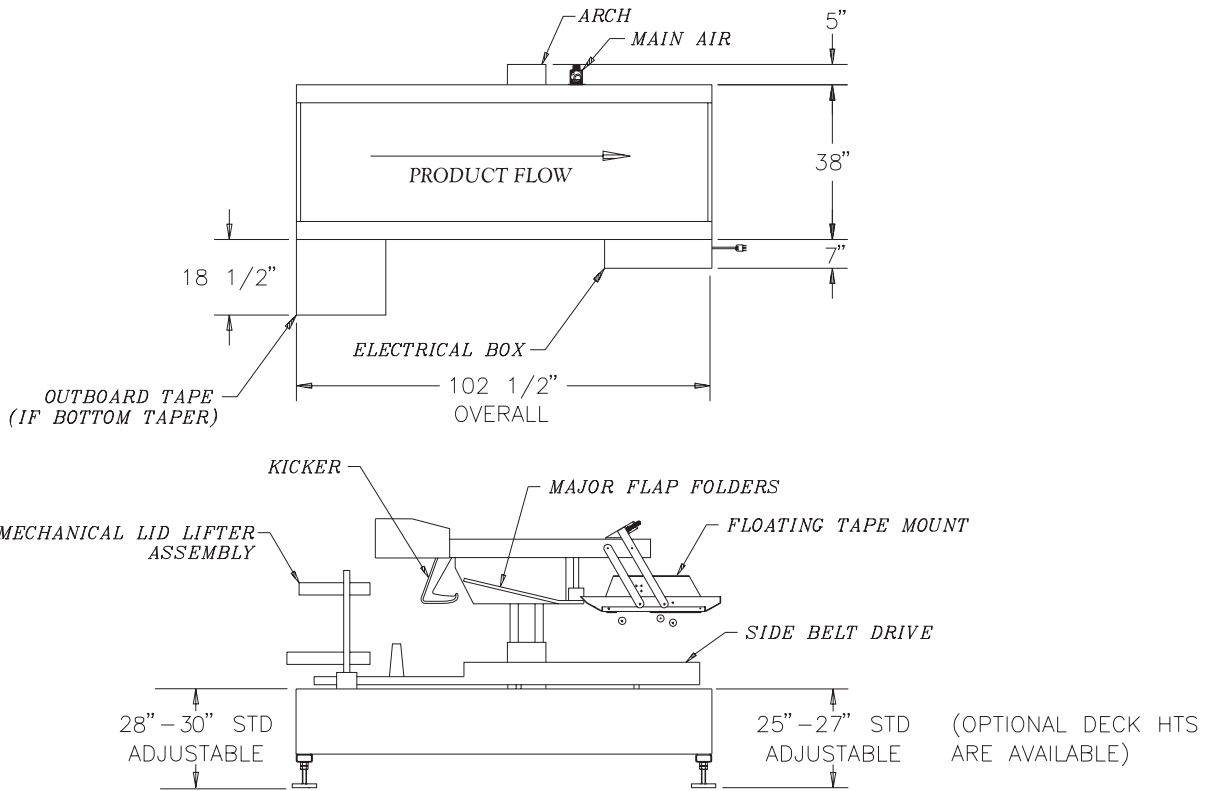
Contact your sales representative for application requirements outside the above specifications.

Distributed by:

MARQ PACKAGING SYSTEMS, INC.

P.O. BOX 9063 YAKIMA WA. 98909

SPECIAL		SHEET 1 OF 1		DRAWING NO. LFA-926		REV. MF	
TITLE HPA T&B TAPER w/ MECHANICAL LID LIFTERS							
DRAWN <i>DLB</i>	DATE 6-13-95	APPROVED	DATE	FINISH	SCALE	-	



ELECTRICAL 

AIR 

APPROX. WEIGHT

1. 110 VOLTS
2. 1 PHASE
3. CYCLE CONTROLS 60

1. 80 PSI

1700#